

## SXSC-120DP Water Processing Unit

The water processing unit regulates the conductivity of the water and serves as cooling system. In routine AC test, the water processing unit and the water cable test termination form a close water circuit. To ensure ample thermal stability, the unit has a tank holding up to 600L deionized water.

The water processing unit allows automatic filling of the water cable test termination with conductive water for lightning impulse test.

Water processing unit includes necessary cycle, liquid level, resistivity, temperature recovery and water tank. It has pumping and charging water function. Electronic control ball type valve control pressure, flowing speed, deionized speed and operation type, sensor and transmitter send signal of adjuster to control panel. Control panel includes reliable operation panel and inspection electric part.

### Function

User controls flowing speed, pressure and operation mode by electric control valve.

Electric sensor inspects temperature, pressure, flowing speed and water conductivity

Main sized emergency switch cut off power

Enhanced glass steel pipe

Sensor send 4-20mA signal to programming unit, control panel show operation mode

### Features

User friendly touch screen interface for intuitive and convenient operation;

Switching between test modes (such as AC and LI modes) is easy;

Safety features to monitor temperature, pressure, water flow and conductivity;

Warning messages, emergency stop button, safe circuit interlock, pressure valves for operating comfort

## Technical specification

- Power supply: 380V, 10A , 50/60Hz
- Maximum cooling capacity: 120kW
- Water volume: 600L
- Max temperature of normal flowing speed: 60°C
- Maximum pressure: 0.5MPa;
- Control range of conductivity: 0.1~2μs /cm
- Maximum ambient temperature: 40°C
- Minimum ambient temperature: 3°C
- Maximum cooling water temperature: 20°C
- Minimum cooling water flow speed: 19 L /min
- Connection water pipe: 1.5 inch
- Fast water connector: 1 inch
- Size: (L) 2000mm x (W) 1200mm x (H) 1600mm
- Weight: 210kg

## Control and indicator

It adopts PLC based control unit, there is one touch screen on the panel. We have considered reliability and ease operation when designing the cable terminal, the sensor in water adjuster sends signal to control panel. Specific unit of user get pressure, conduction, flowing speed and temperature by scanning part. User can operate and switch to control the test, indicator show system status, software display passage of water. All the operation is by the touch screen.

With emergency button on the control panel.

Signal was sent to scanning unit by 2 inductors, transmitter and thermos element, pressure sensor measures the pressure of outlet where is the biggest in system. There is pressure/vacuum meter at the inlet, user can open the back door to check value, 2 thermos element measure temperature before water enter heating exchanger, it is the highest temperature in whole system. We

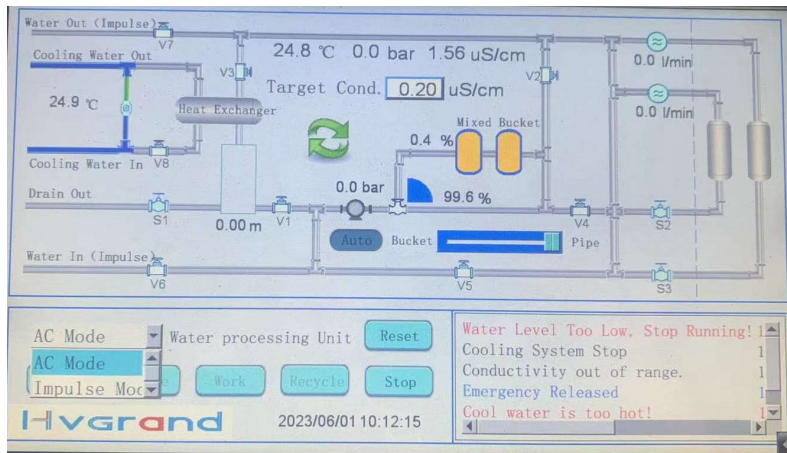
commission all of the sensor and transmitter in factory.

Turn on cycling button and turn off working button when resistivity below 1.5 MΩ until resistivity rise to 5 MΩ, then turn off cycling button and turn working button. Liquid switch will be turned off automatically when water level is not enough. Turn on cycling button when temperature is more than 60° C until reduce to 30° C. The emergency can cut off power of control, pump and main power.

### Scope of supply

No	Name	Specification	Quantity
1	Control unit and processing unit	SXSC-120DP	1 set
2	Water pipe	20 M/Piece	4 pieces
3	Quick connector		10 pieces





Function	Gain	Offset	Function	Gain	Offset
Water Level of Tank	1.00	0.0	Pump Pressure	1.00	0.0
Cooling Water Temp.	1.00	0.0	Pipeline Pressure	1.00	0.0
Piping Water Temp.	1.00	0.0	Pipeline Conductivity	1.00	0.0
Terminal 1 Flow	1.00	0.0	Valve Open Size	1.00	0.0
Terminal 2 Flow	1.00	0.0			

Return

2023/06/01 10:11:48

Hvgrand Sanmen Shixuan Electric Co. Ltd.